

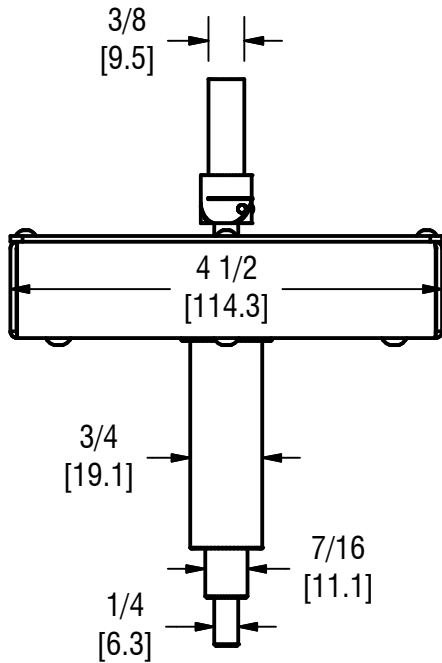
B28 STYLE DIAL GEAR ASSEMBLY

DS-544

97 West Street, Medfield, MA 02052

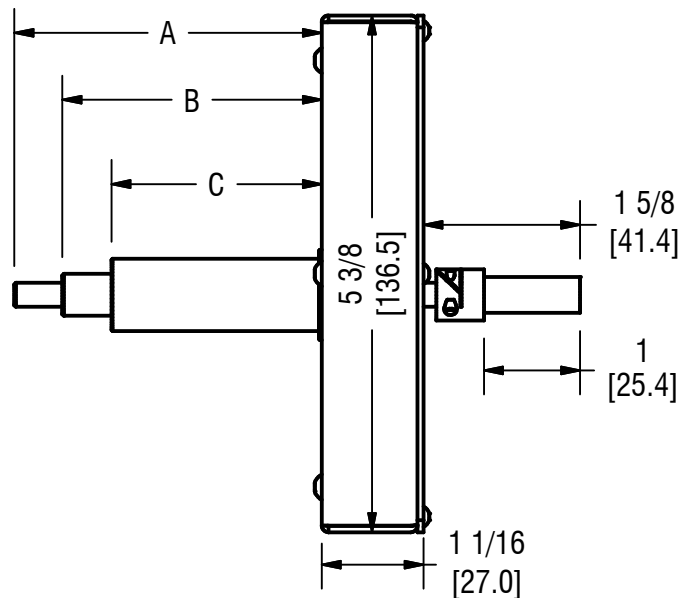
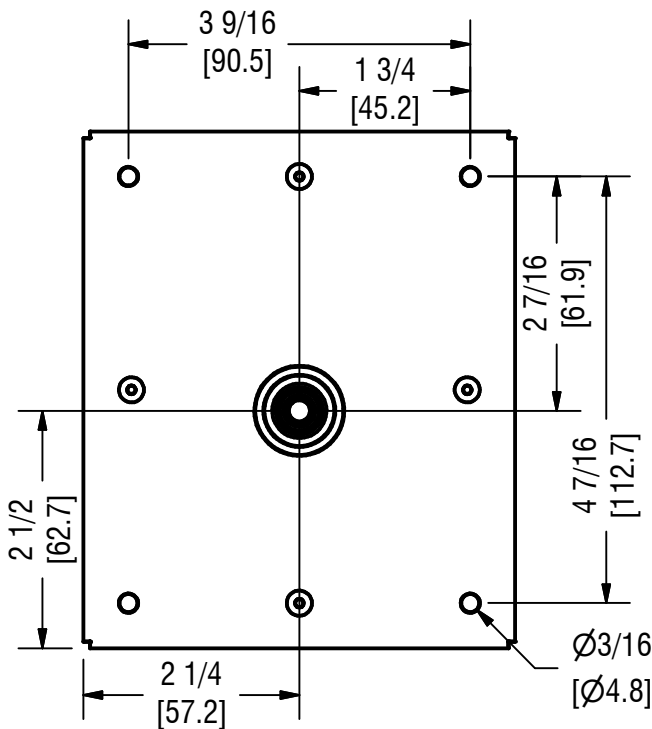
p: 508.359.4396 f: 508.359.4482

www.electrictime.com



MECHANICAL SPECIFICATIONS

- Replaces existing dial gear assemblies while utilizing the original drive mechanism
- Up to Ø48" dial with unprotected hands
- Up to Ø60" dial with protected hands
- Consult Electric Time Co. for mounting suggestions
- Compatible with Electric Time Co. standard B28 style clamp hand hubs
- Shafting, universal joints, and slide couplings available. Contact Electric Time Co.
- Approximate weight = 1-3/4 lbs (.793 kg)



	A	B	C
G1	2 5/16" [58.7]	1 11/16" [42.9]	15/16" [23.8]
G7	3 3/16" [81.3]	2 11/16" [68.6]	2 3/16" [55.6]
G8	5 15/16" [150.8]	5 3/16" [131.8]	2 3/16" [55.6]