

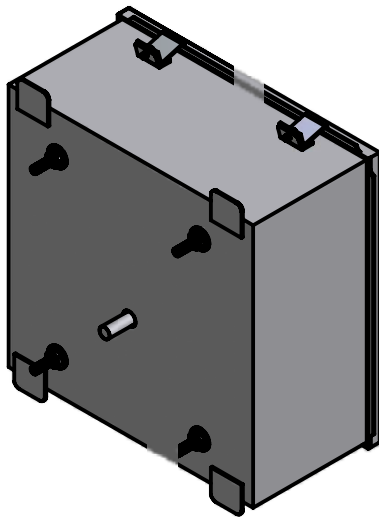
DS-510

**#4 MINUTE IMPULSE
DRIVE MOVEMENT**

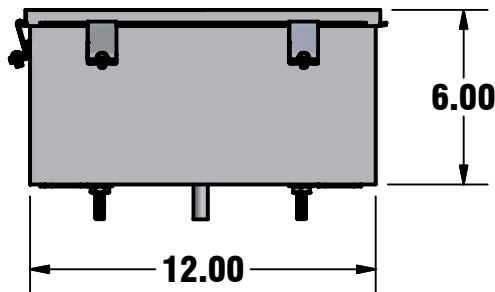
97 West Street, Medfield, MA 02052

p: 508.359.4396 f: 508.359.4482

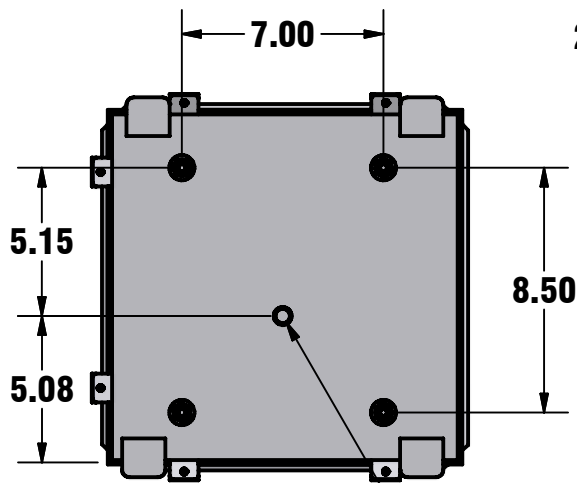
www.electrictime.com



FRONT ISOMETRIC VIEW



TOP VIEW

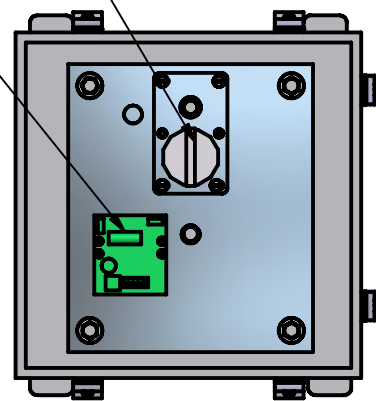


FRONT VIEW

Ø0.50 (1 RPH
OUTPUT SHAFT)

24VAC GEAR MOTOR

CMI BOARD



REAR VIEW
(COVER REMOVED)

Note: Specifications subject
to change without notice

MECHANICAL SPECIFICATIONS

- 1) 1 RPH OUTPUT FOR USE WITH EXISTING DIAL GEARS
- 2) DRIVES UP TO 15' DIAL WITH UNPROTECTED HANDS
- 3) HAND AND DIAL GEAR DESIGN WILL AFFECT MAXIMUM DIAL SIZE. CONTACT FACTORY FOR DESIGN ASSISTANCE
- 4) CONTACT FACTORY FOR MOUNTING BRACKET INFORMATION

ELECTRICAL SPECIFICATIONS

- 1) 24VAC-50/60Hz-300mA-7W
- 2) ALTERNATING DRIVE SIGNAL MINUTE IMPULSE OPERATION (USING ELECTRIC TIME CO. 99B-MI CLOCK CONTROLLER)