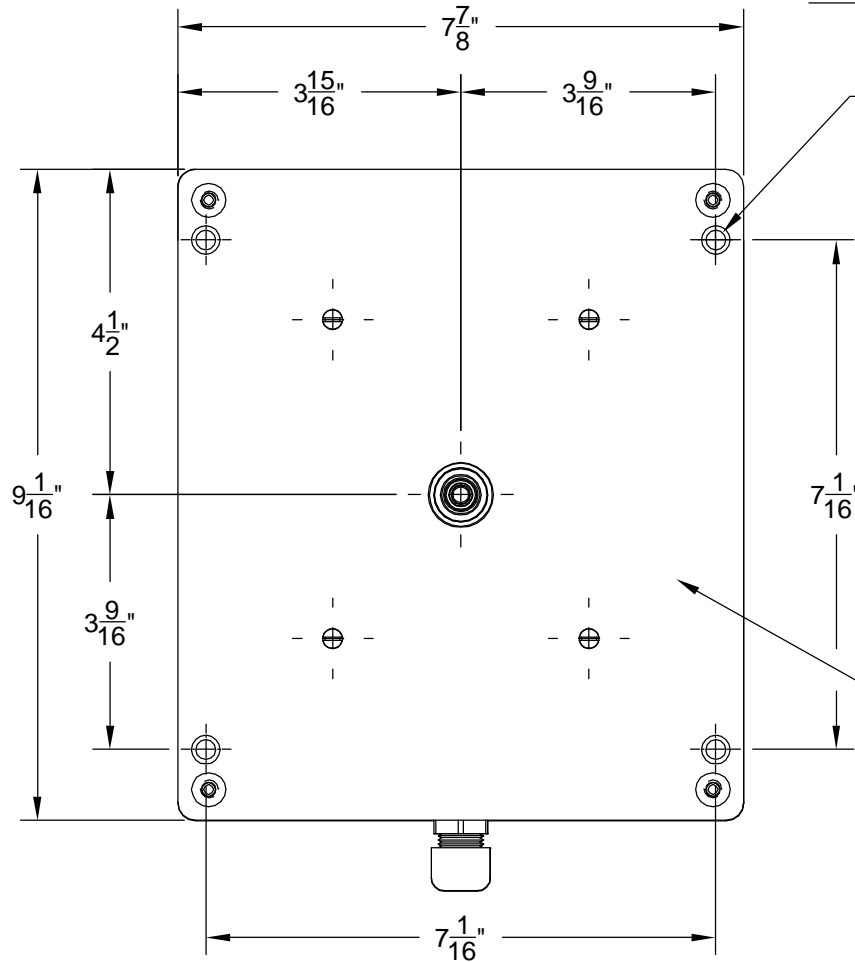
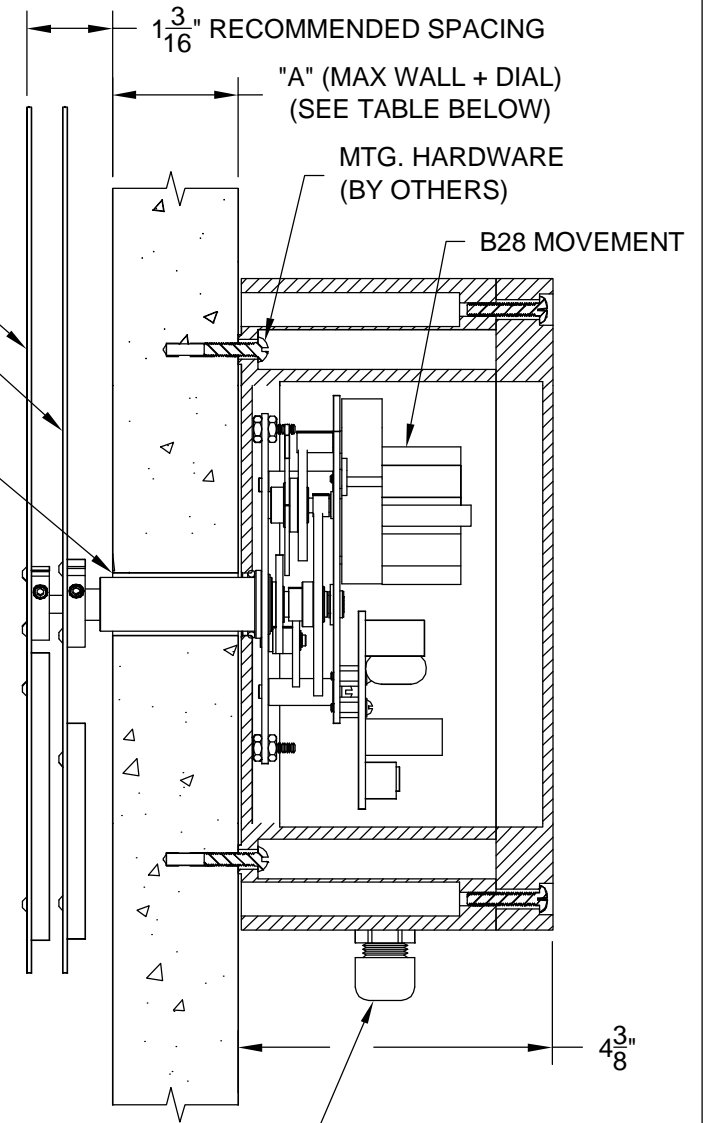


**WEATHERPROOF
REAR ACCESS MOUNTING
B28 MOVEMENTS**



Ø1/4" MTG. HOLES
MINUTE HAND
HOUR HAND
Ø7/8" HOLE IN WALL REQ'D
WP-WB10 WALL BOX
(CAST ALUMINUM)
(WEATHERPROOF)



INSTALLATION SPECIFICATIONS

- 1) DRILL CENTER HOLE IN DIAL / WALL PER DIMENSION SHOWN
- 2) MOUNT WP-WB10 WALL BOX USING SCREWS / BLOCKING AS REQUIRED TO ACHIEVE RECOMMENDED SPACING AS SHOWN (HARDWARE & BLOCKING BY OTHERS)
- 3) INSTALL CLOCK HANDS

B28G1	3/4"
B28G7	1-3/4"
B28G8	4-1/2"
MOV'T	"A"

Note: Specifications subject to change without notice.