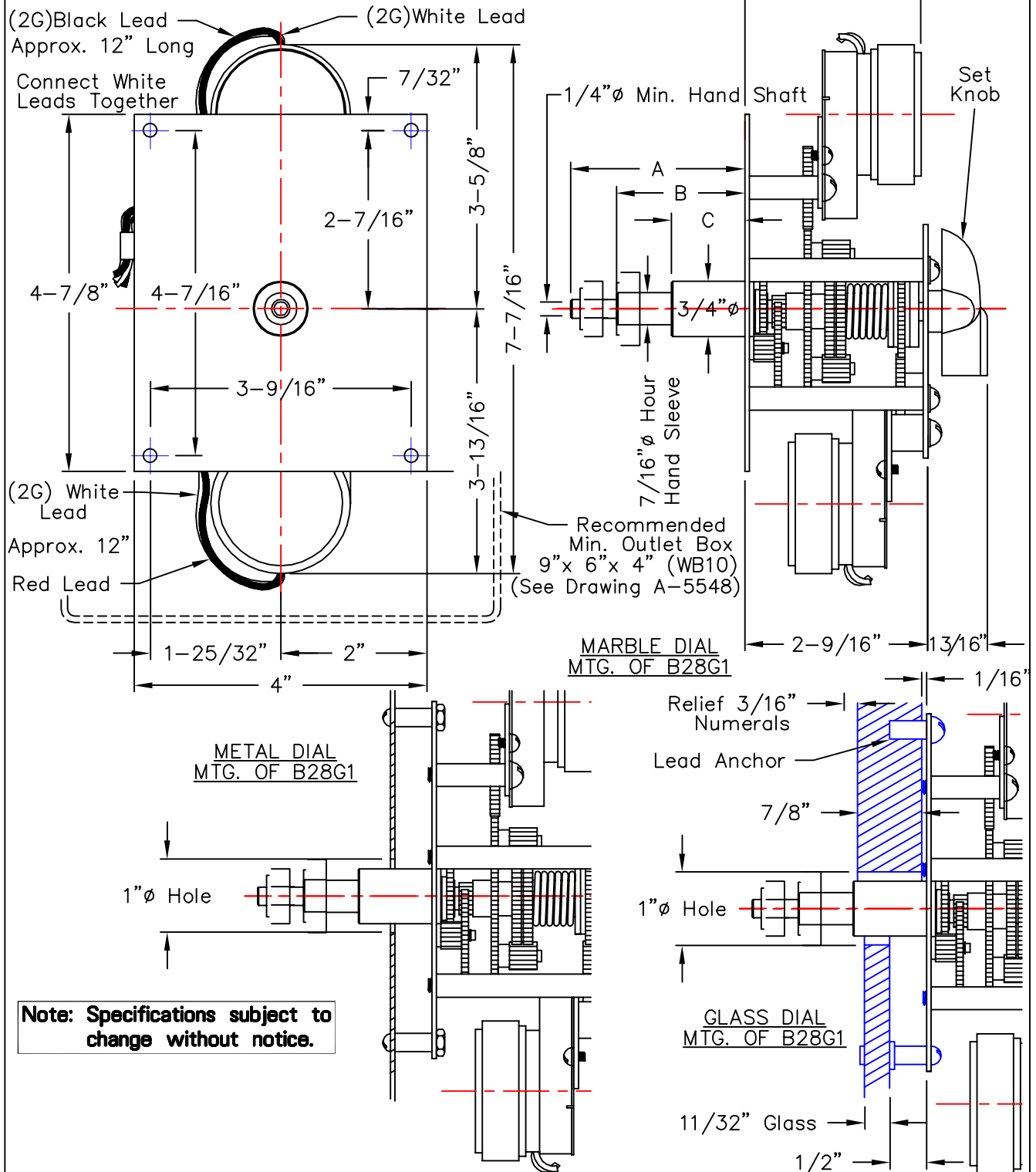


**B28 TYPE SINGLE AND DUAL MOTORED MOVEMENT**

UP TO 48" DIAL SIZE WITH UNPROTECTED HANDS,  
UP TO 60" DIAL SIZE WITH PROTECTED HANDS



Cat.#	Single/Dual Motor	A	B	C	Max. Dial Thickness	Approx. Ship. Weight
B28G1	Dual	2-3/8"	1-3/4"	1"	7/8"	4 lbs.
B28G3	Single	2-3/8"	1-3/4"	1"	7/8"	4 lbs.
B28G7S	Single	3-1/4"	2-3/4"	2-1/4"	1-3/4"	4-1/2 lbs.
B28G7D	Dual	3-1/4"	2-3/4"	2-1/4"	1-3/4"	4-1/2 lbs.
B28G8S	Single	6"	5-1/2"	2-1/4"	4-1/2"	5 lbs.
B28G8D	Dual	6"	5-1/2"	2-1/4"	4-1/2"	5 lbs.
B28G7D-SS	Both/ Sw. Sec.Hand					