

4

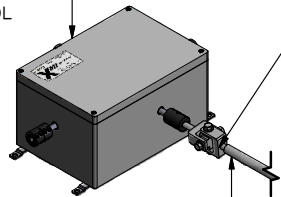
3

↓

2

1

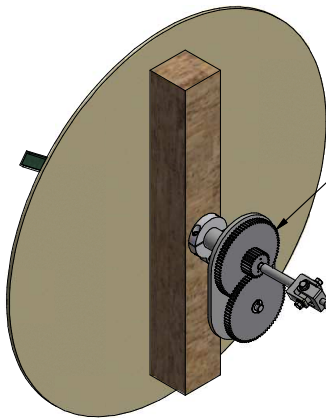
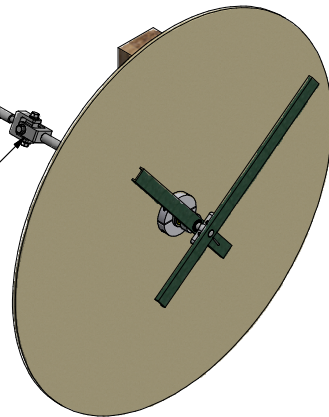
XMI (4-Way) MOVEMENT
REQUIRES 24VAC INPUT
FROM 99BMI CONTROL



RF TRANSPARENT
UNIVERSAL JOINT
(MOV'T SHAFTING)

CONNECTION SLEEVE
CUT TO LENGTH,
DRILLED & PINNED
(DONE ON SITE)

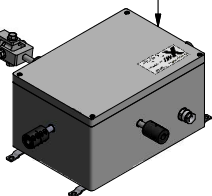
RF TRANSPARENT
UNIVERSAL JOINT
(DGA SHAFTING)



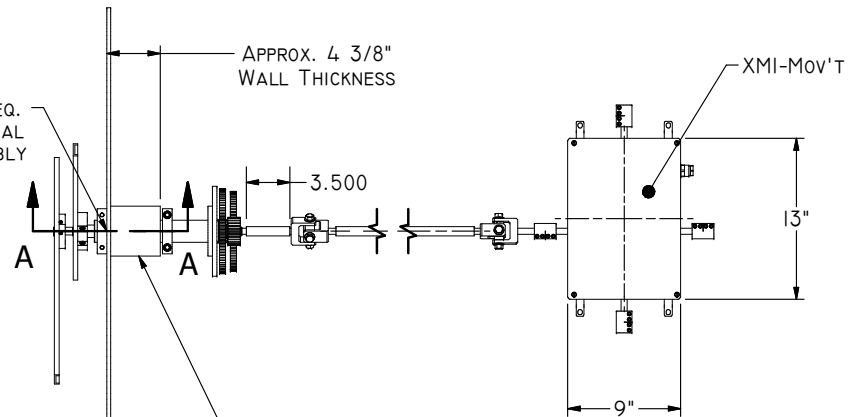
DIAL GEAR ASSEMBLY
~RF TRANSPARENT~
DGA-CI-FG (REV-A)

XMI - MOVEMENT

CONNECTION SLEEVE
(LENGTH = TBD)



Ø2" HOLE REQ.
TO MOUNT DIAL
GEAR ASSEMBLY

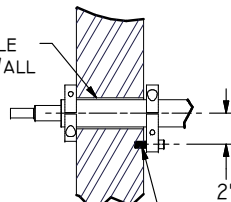


DIAL FACE
(BY OTHERS)

4x4 COLUMN
(BY OTHERS)

CONNECTION SLEEVE
(LENGTH = TBD)

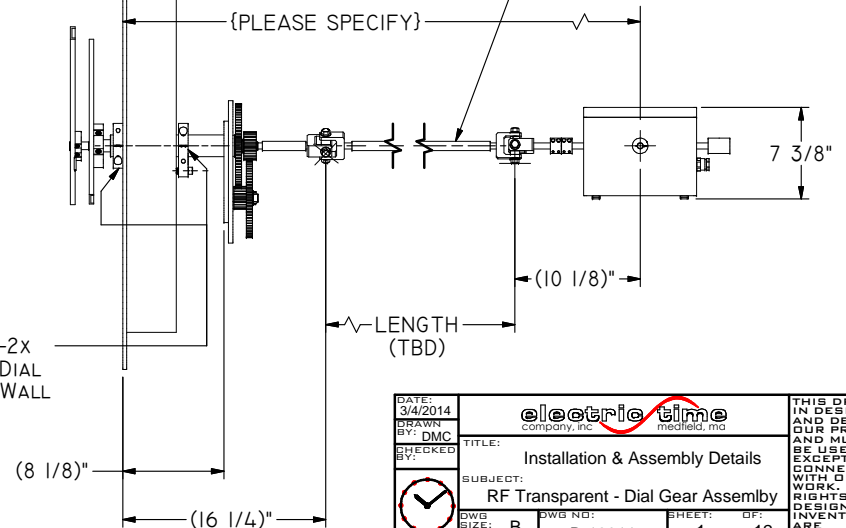
Ø2" HOLE
THRU WALL



ANTI-PIVOT PIN
Ø3/8" x 3/4"

SECTION A-A

MOUNTING COLLARS -2X
USED FOR SECURING DIAL
GEAR ASSEMBLY TO WALL



4

3

↑

2

1

DATE: 3/4/2014	electric time company, inc medfield, ma		THIS DRAWING IN DESIGN AND DETAIL IS OUR PROPERTY AND MUST NOT BE USED EXCEPT IN CONNECTION WITH OUR WORK. ALL RIGHTS OF INVENTION ARE RESERVED.
DRAWN: BY: DMC	TITLE: Installation & Assembly Details		
CHECKED: BY:	SUBJECT: RF Transparent - Dial Gear Assembly		
	DWG NO: B-13911	SHEET: OF: 1 12	
PATH: C:\INVENTOR-TEMP\INVENTOR\DRAWINGS\B-13911.idw			