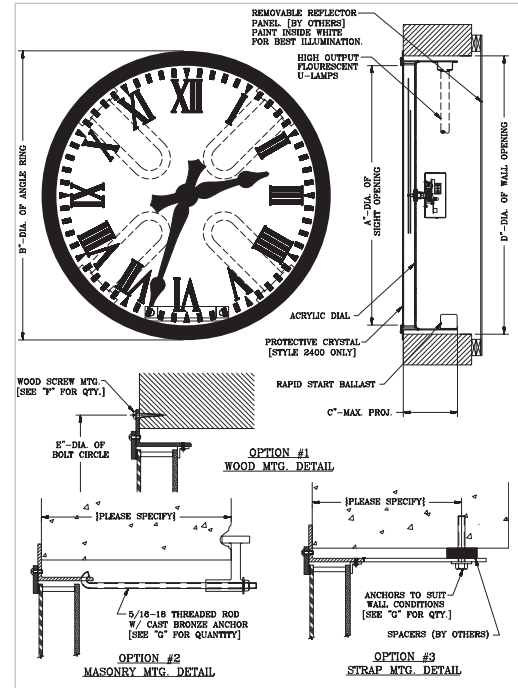


## BACK-LIGHTED FLUSH CLOCKS

### 2400/4600 FLUSH-THROUGH THE WALL ILLUMINATED CLOCKS.

Self-Illuminated Clocks available in 18" to 60" sizes (Style 2400) and 72" to 96" (Style 4600). Shown with Type "MS-A" hands and Type "A" markings. Available with any of the hands and dial markings shown on page 5, or ones of your own design. Although "standard" sizes are shown, these clocks can be manufactured to fit any size or shape tower opening be it square, rectangular, octagonal, or elliptical.



**PHOTO LEFT:**

Pitt Street Centre - Alexandria, VA architect - Rust Orling & Neale Architects - Alexandria, VA.

**STANDARD SHORT FORM SPECIFICATIONS PHOTOGRAPH LEFT:**

Outdoor, Style 4600 Illuminated clock, 84" in diameter. Colonial Type MS-A hands with arrow tails. Type A dial markings. Single piece acrylic dial. Aluminum mounting & retaining rings. Hands, rings, and dial markings to have a matte black painted finish. High output fluorescent tubes to be supplied so that illumination is uniform. Low temperature high-output ballast. Illumination to be an integral part of the clock. Type 99B remote reset control to be located in building electrical room. Clock to be as manufactured by Electric Time Company, Inc. 45 West Street, Medfield, MA 02052 USA. (508) 359-4396.

**2400/4600 SERIES-FLUSH MOUNTED CLOCKS**

Style	A"	B"	C"	D ± 3/8"	E"	F	G	Lamps
2418	17 1/2"	21 3/8"	11 7/8"	19 5/8"	20 3/4"	6	4	NEON
2424	23 1/2"	27 3/8"	10 3/4"	25 5/8"	26 3/4"	6	4	NEON
2430	29"	34 3/8"	13 1/4"	32"	33 3/4"	6	4	NEON
2436	35"	40 3/8"	10"	38"	39 3/4"	8	4	4
2442	41"	46 3/8"	10"	44"	45 3/4"	8	4	4
2448	47"	52 3/8"	10"	50"	51 3/4"	10	6	4
2454	52"	58 3/8"	10"	56"	57 3/4"	10	6	4
2460	59"	65 3/8"	10"	63"	64 3/4"	12	6	6
4672	72"	78 3/8"	11 1/2"	76 1/8"	77 3/4"	20	8	6
4684	84"	90 3/8"	11 1/2"	88 1/8"	89 3/4"	20	12	8
4696	94 1/2"	101 7/8"	11 1/2"	99 5/8"	101 1/4"	26	12	8